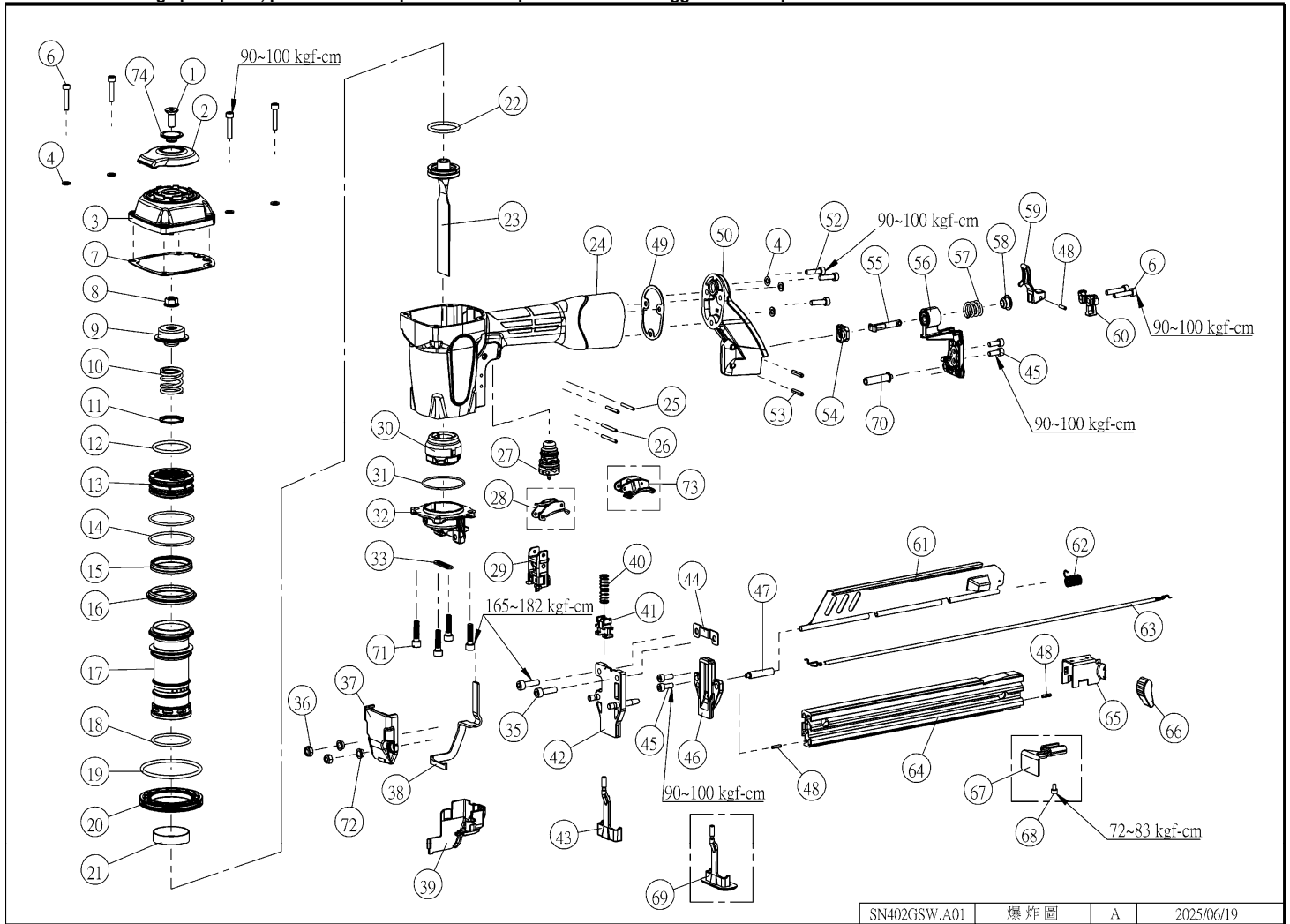


PARTS LIST / SCHEMATICS, MODEL NUMBER : SN402GSW

NOTE : When ordering spare parts, please state the part name and part number. ★: Suggested wear parts.



SN402GSW.A01 爆炸圖 A 2025/06/19

Item	★	Part NO.	Description	Q'ty	Item	★	Part NO.	Description	Q'ty	Item	★	Part NO.	Description	Q'ty
1		100930	Screw M8x20	1	35		100077	Screw M6x22	2	68		100778	Hex.Soc.Hd.Bolt M4*6	(1)
2		105074	Deflector	1	36		101018	Nut M6	2	69		101675	LOWER CONTACT ARM-ROOF	(1)
3		101657	Cap, Cylinder Unit	1	37		105075	Nose Cover	1	70		101655	Pin, Magazine Cover	1
4		100638	Washer	7	38		101671	Contact Arm	1	71		103168	Screw M6x22	4
6		100933	Screw M5 x 25	6	39		101672	Cover, Contact Arm Assy.	1	72		105073	Bushing	2
7		100952	Seal, Cylinder Cap	1	40		101687	Spring	1	73		120143	SEQ6 ST Trigger Kit	(1)
8		100936	Nut M8	1	41		101673	Adapter	1	74		105072	Bushing	1
9		100937	Bumper, Top	1	42		105065	Nose	1					
10		100938	Spring, Head Valve	1	43		101690	Arm, Lower Contact	1					
11		100963	Spring Washer	1	44		101689	Spacer	1					
12	★	100940	O-Ring	1	45		101688	Hex.Soc.Hd.Bolt M5*14	4					
13		100939	Valve, Head	1	46		109479	Core Tip	1					
14	★	100941	O-Ring	2	47		101654	Pin A, Magazine Cover	1					
15		100943	Seal, Cylinder	1	48		100090	Spring Pin	3					
16		100942	Retainer, Cyl. Sleeve	1	49		100968	Seal, End Cap	1					
17		101659	Cylinder	1	50		101876	Cap, Frame End	1					
18	★	100944	O-Ring	1	52		100530	Screw M5 x 20	3					
19	★	100947	O-Ring	1	53		100978	Spring Pin 4 x 20	2					
20		100946	Ring, Cylinder Sleeve	1	54		100980	Disc, Latch Stop	1					
21		100948	Seal, Check	1	55		100982	Pin, Latch	1					
22	★	101910	O-Ring	1	56		101668	Cap, Magazine End	1					
23	★	105056	Main Piston Unit	1	57		100975	Spring, Latch Lever	1					
24		101874	Frame	1	58		100976	Bushing, Spring	1					
25		100174	Roll Pin	2	59		100977	Toggle, Magazine	1					
26		100966	Spring Pin	2	60		100984	Mazagine Stop	1					
27		100063	Trigger Valve Unit (C.T)	1	61		101684	Magazine Cover	1					
28		100067	Trigger Unit (C.T)	1	62		101680	Spring	1					
29		103295	Upper Trip Guide Assy.	1	63		101893	Spring, Pusher Assy.	1					
30	★	101664	Bumper	1	64		109477	Core Assembly	1					
31	★	100643	O-Ring	1	65		105055	Pusher	1					
32		101665	Frame, Bottom	1	66		101003	Handle, Pusher	1					
33		105066	Driver Guide	1	67		101663	Shingle Guide	(1)					

SN402GSW.A01A

Ver : SN402GSW.010A

This tool is available with 2 actuation systems. Each system requires different trigger and / or valve parts as listed hereunder.

Bump Fire actuation: Black Trigger
Sequential actuation: Grey/Silver Trigger

MOQ for items in the following categories is 10pcs, order quantities under 10pcs for these items will be adjusted accordingly.

- (1) Orings – not included in the oring kits
- (2) Screws, bolts
- (3) Nuts
- (4) Pins - roll pin, solid pins
- (5) Standard washers – not special washers

