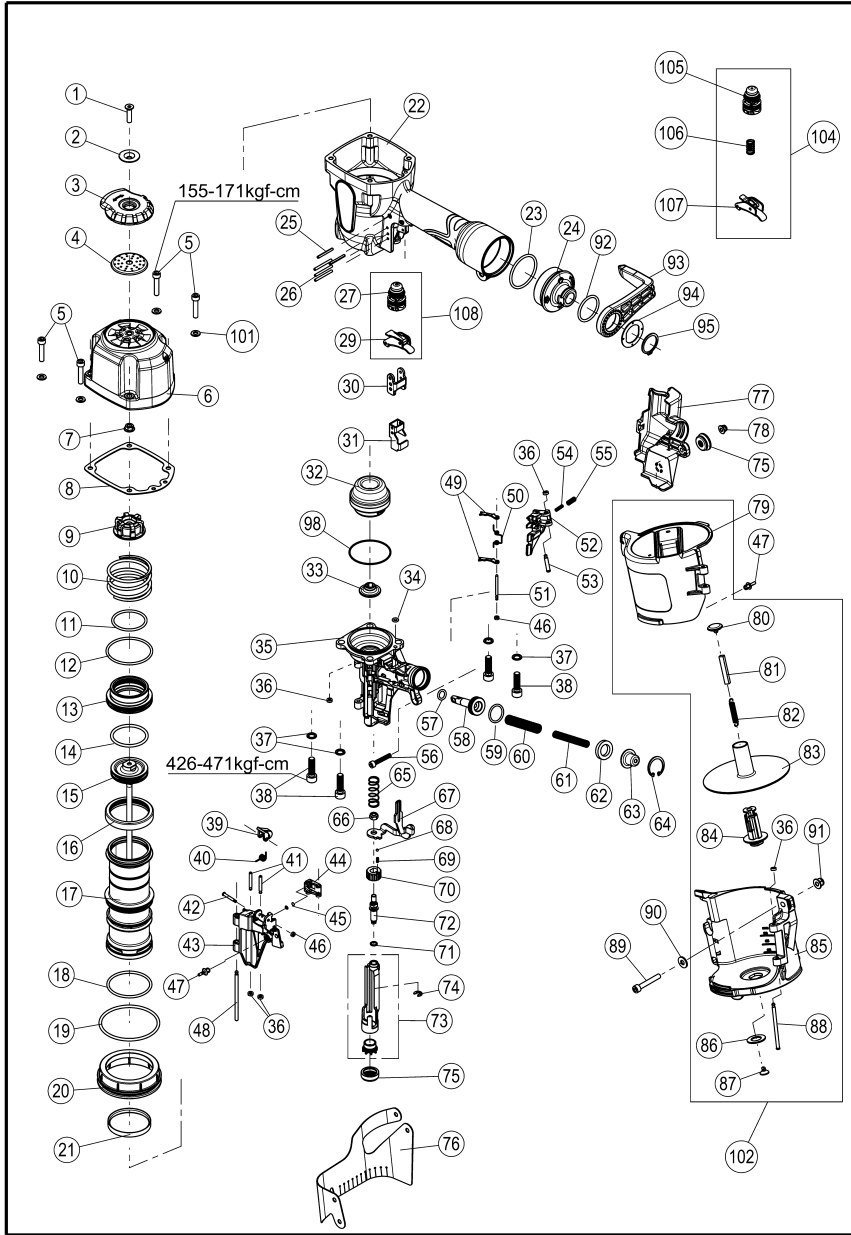


PARTS LIST / SCHEMATICS, MODEL NUMBER : FCN90LB Series



NOTE : When ordering spare parts. Please state the part name and part number. ☆ : Suggested wear parts.

Item	☆	Part NO.	Description	Q'ty	Item	☆	Part NO.	Description	Q'ty
1		104074	Screw M6*25	1	54		100336	Comp Spring	1
2		104083	Exhaust Bushing	1	55		100337	Comp Spring	1
3		104075	Exhaust Cover	1	56		100568	Screw Socket Hd M5*30	1
4		100013	Exhaust Filter	1	57		100011	O-Ring	1
5		100208	Screw Socket Hd M6*35	4	58		101369	Feed Piston	1
6		105311	Cylinder Cap Unit	1	59		100098	O-Ring	1
7		101331	Nut	1	60		100206	Spring, Feed Piston	1
8		100464	Cylinder Cap Seal	1	61		101370	Spring B Feed Piston	1
9		104077	Feed Piston Stop	1	62		100205	Feed Piston Stop	1
10		104076	Spring	1	63		100207	Spring Collar	1
11		100147	O-Ring	1	64		100104	C-Ring	1
12		100149	O-Ring	1	65		101384	Spring, Contact Arm	1
13		104078	Head Valve Piston	1	66		101018	Nut	1
14		104055	O-Ring	1	67		104068	Contact Arm	1
15		104056	Main Piston Unit	1	68		101387	Steel ball	1
16		100154	Cylinder Seal	1	69		101388	Compression Spring	1
17		104059	Cylinder	1	70		101389	Adjust dial	1
18		100470	O-Ring	1	71		101391	O-Ring	1
19		104086	O-Ring	1	72		104082	Adjusting	1
20		104061	Ring, Cylinder Sleeve	1	73		104088	Front Contact Arm Unit	1
21		100473	Check Valve	1	74		104097	E-Ring	1
22		103150	Frame Unit(Mag.)	1	75		104096	No-Mar tip	2
23		100327	O-Ring	1	76		101396	Dust Cover	1
24		104090	End Cap	1	77		101397	Contact Arm Cover	1
25		100039	Roll Pin	2	78		101096	Nut, Elastic Stop	1
26		100220	Roll Pin	3	79		101407	Magazine Cover	1
27		100063	Trigger Valve Unit (C.T)	1	80		101565	Receiver, Spring	1
29		100067	Trigger Unit (C.T)	1	81		100110	Spacer	1
30		100495	Contact Arm Cover	1	82		100111	Tension Spring	1
31		100175	Contact Arm Guide	1	83		104073	Nail Support	1
32		104062	Bumper	1	84		100112	Magazine Post	1
33		101307	Driver Guide	1	85		101409	Magazine	1
34		100484	O-Ring	1	86		100115	Post Retainer	1
35		104064	Nose	1	87		100113	Receiver, Spring	1
36		100078	Rubber Washer	5	88		100364	Step Pin	1
37		101235	Washer	4	89		100045	Screw Socket Hd M6*40	1
38		103170	Screw Socket Hd M8*28	4	90		100046	Plain Washer	1
39		100349	Door Latch	1	91		100117	Nut, Elastic Stop	1
40		101377	Spring, Door Latch	1	92		104095	O-Ring	1
41		101553	Step Pin	2	93		104091	Hook	1
42		100347	Step Pin	1	94		104092	Washer	1
43		104066	Door	1	95		104093	C-Ring	1
44		101551	Check Pawl	1	98		100180	O-Ring	1
45		100085	Compression Spring	1	101		107041	Plain Washer	4
46		103276	Rubber Washer	2	102		104681	Magazine Assembly	(1)
47		104105	Hook Dust Cover	2	103		103274	O-ring Kit	(1)
48		101362	Pin	1	104		100453	Seq. Trigger Valve Assy. (S.T.)	(1)
49		104069	Check Pawl Stop	2	105		100450	Seq. Trigger Valve	(1)
50		101540	Spring	1	106		100389	Spring	(1)
51		104070	Pin	1	107		100386	Seq. Trigger Unit	(1)
52		104072	Feed Pawl	1	108		107261	Sequential to Contact Fire Conversion kit	(1)
53		100340	Step Pin	1					

Ver : FCN90LB.50

About EVERWIN



This tool is available with 2 actuation systems. Each system requires different trigger and / or valve parts as listed hereunder.
 Bump Fire actuation: Black Trigger
 Sequential actuation: Grey/Silver Trigger

MOQ for items in the following categories is 10pcs, order quantities under 10pcs for these items will be adjusted accordingly.
 (1) Orings – not included in the oring kits (2) Screws, bolts
 (3) Nuts (4) Pins - roll pin, solid pins
 (5) Standard washers – not special washers